



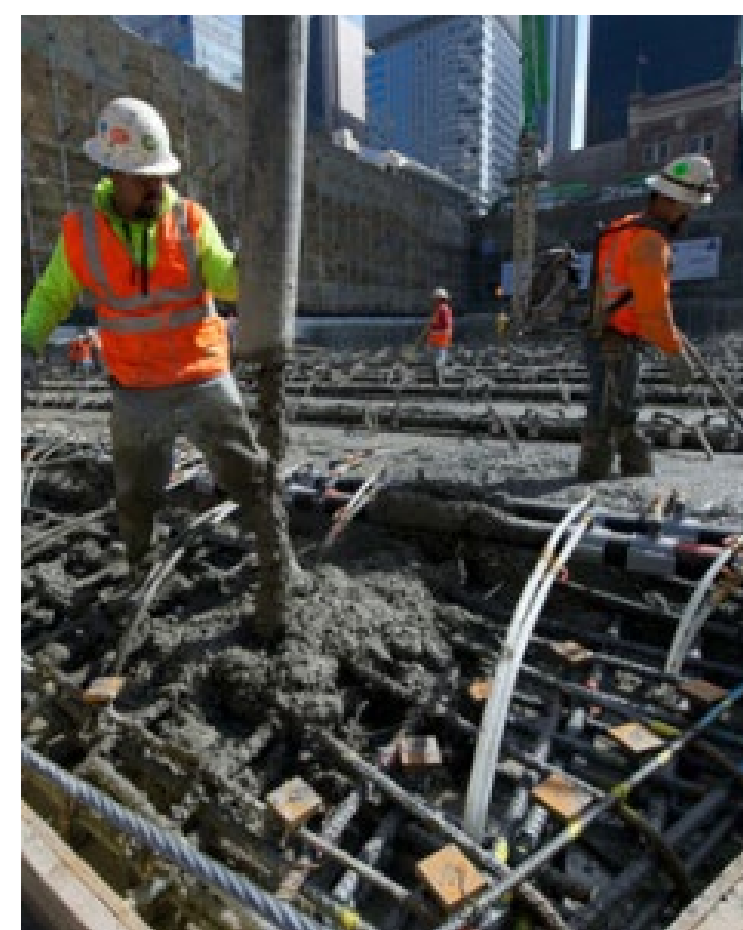
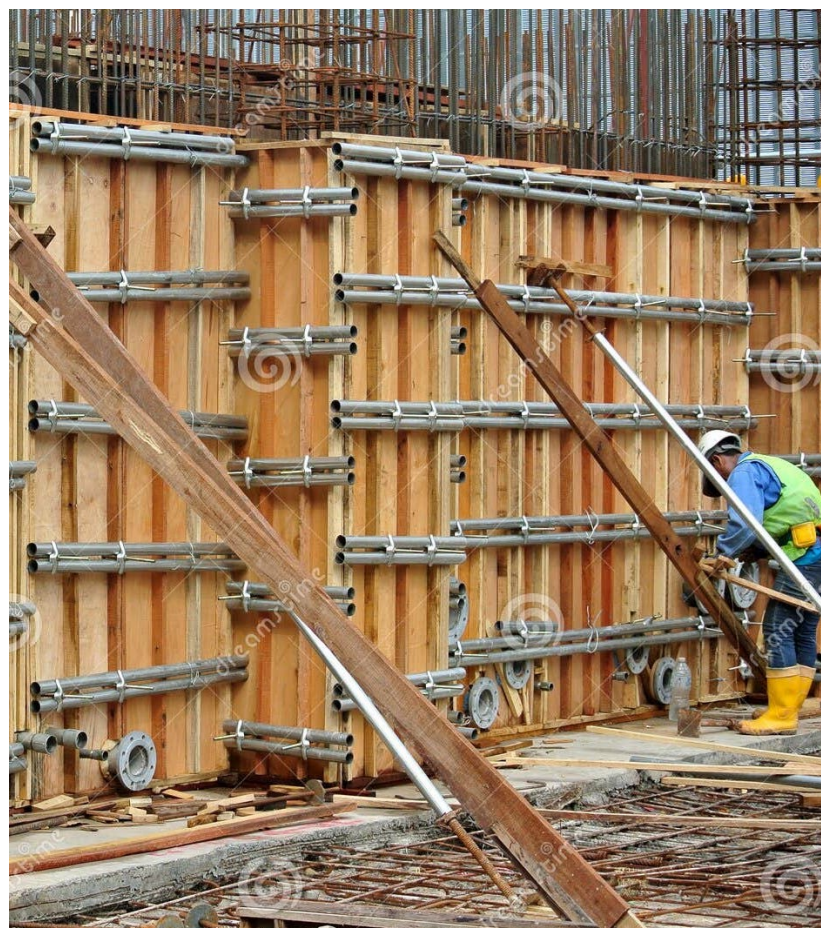
Better Efficiency

Building Reinforced Concrete Houses

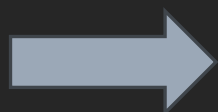
PREPARED BY ADVANCED DEVELOPERS ASSOCIATION TAIPEI TAIWAN



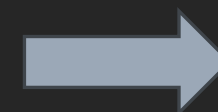
Reinforced concrete houses represent a significant account of new housing development around the world.



Rebar Work

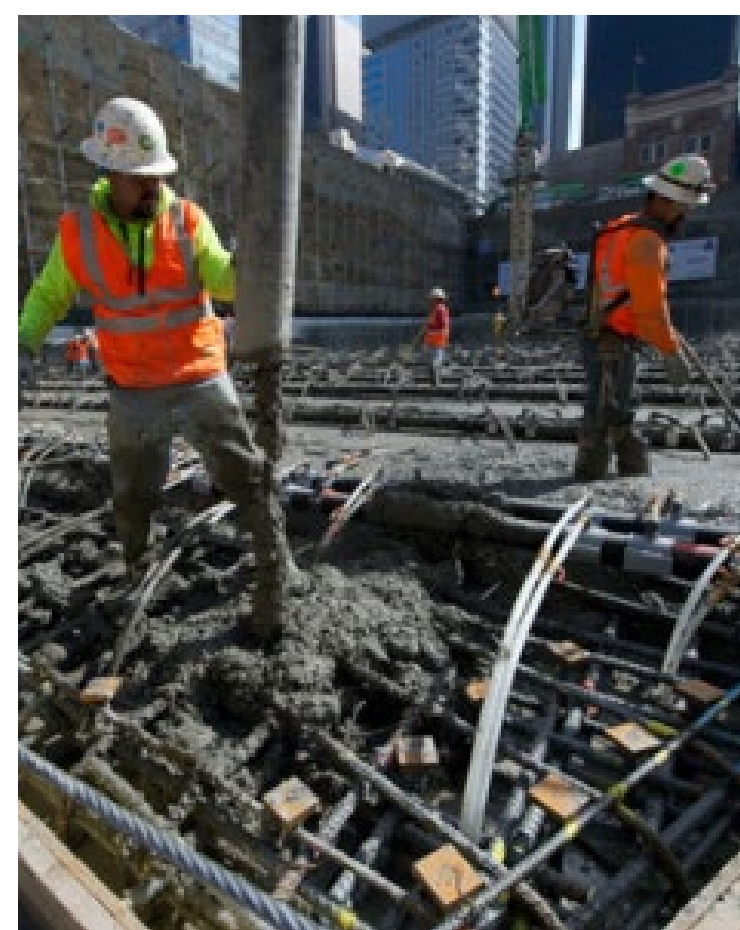
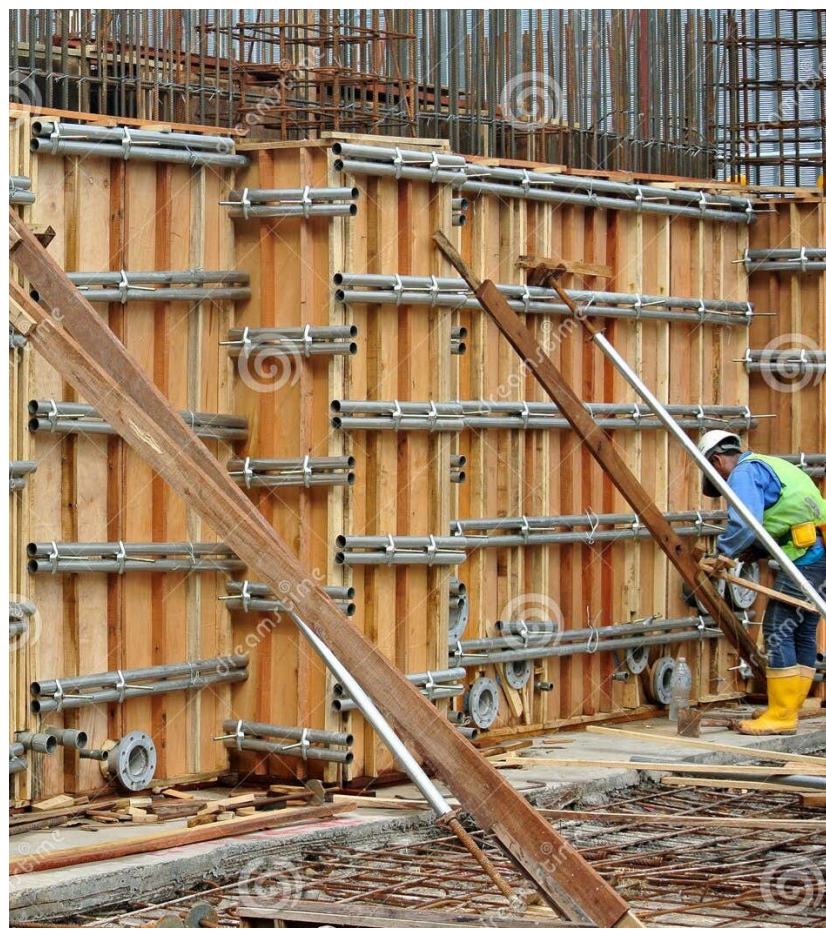


Form Work



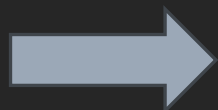
Pouring

Measuring Survey 1 day, Outside Wall Formwork 3 days, Wall Rebar and Plumbing 2 days, Inside Wall Formwork 3 days, Slab Formwork 4 days, Slab Rebar and Plumbing 4 days, Pouring 1 day, =18 days



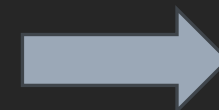
Rebar Work

Average Skill Workers



Form Work

High Skill Workers



Pouring

Low Skill Workers

Advantages

Light Weight

The panel material is aluminum alloy 6061-T6.
Weight 25kg/m² makes manpower carrying possible.

Flexible Operation

The panel system can be lifted by tower crane in whole, or dismantled and installed by labors. It can realize casting of wall, beam, slab and staircase monolithically or in two stage casting.

More Usage times

The panel is made of extrusion profiles with high strength. It is not easy to be deformed by external force or water erosion. The panel can be used more than 300 times with appropriate usage and maintenance.

Better Concrete Surface

Main panel width 500mm makes the concrete surface more smooth and fewer joints. The verticality is better than concrete surface made by plywood or steel formworks.

Improve Efficiency

1. Early-dismantling application improves the form cycle and saves cost for users.
2. No need to re-shore.

Save Labor Cost

1. Assembled easily with only pins & wedges, tie rods & wing nuts. Labors can finish the installation and dismantle with hammers.
2. No need to plaster the concrete surface after concrete pouring.



Saving

Shorten 3 days worktime per floor

30% less onsite workers

Require less skill workers

Less onsite waste

Require minimum plastering work



Cost

Taipei Condominium Project

24 Floors above ground Total 380 units

6 Floors Underground Parking

Total Floor area = 70,000 M²

Traditional formwork and Plastering cost
=USD 7,976,500

Aluminum System formwork cost
=USD8,287,400

3.9% more expensive

